



555 12th Street, Suite 1450
Oakland, CA 94607
Phone: 510-452-2000
www.franz.com

Using TopBraid Composer with AllegroGraph

Use TopBraid Composer with AllegroGraph 3

I want to use TopBraid Composer with the Java Edition of AllegroGraph, how do I get started? 3

How do I update AllegroGraph Java Edition and TopBraid Composer libraries? 4

How do I export the ontology created with TopBraid Composer to AllegroGraph database? 5

How to use TopBraid Composer with the Lisp Edition of AllegroGraph? 7

Using TopBraid Composer with AllegroGraph

I want to use TopBraid Composer with the Java Edition of AllegroGraph, how do I get started?

TopBraid Composer communicates with AllegroGraph through a server. You first need to install both products. Make sure you have the latest version of TopBraid Composer and all of the patches installed in AllegroGraph. (Described in the AllegroGraph FAQ, <http://agraph.franz.com/support/faq/#tbc>)

Before using TopBraid Composer with AllegroGraph, it may be a good idea to update both the AllegroGraph Java Edition and agraph.jar in the TopBraid Composer libraries. (See next section below)

First start the AllegroGraph Server. The Java Edition is distributed with an executable that starts a server when it is run. If you are running on a Windows operating system, go to *Start Menu > All Programs > AllegroGraph Free Java Edition > Start AllegroGraph Free Java Edition Server*. This will start the server.

More detailed information on the AllegroGraph server, including other operating systems can be found here:

<http://agraph.franz.com/allegrograph/doc/java/agraph-java-edition.html#agraph-server>

Then, in TopBraid Composer, select *File > New > OWL/RDFS AllegroGraph Database*.

Fill in the File name and AllegroGraph database name, both with the name you want to call the database, e.g.: agdb1 for both entries.

Fill in the AllegroGraph directory with the directory name, e.g.: C:\temp\agraph\.

The default Host: localhost and Port: 4567 should be ok as is. To access an existing AllegroGraph database (created before or through another program), don't check the box of "Overwrite Existing Database".

Select *Finish*.

A new entry called adgb1.allegro will appear in the Navigator Place. You now have an AllegroGraph database open. To test, try loading an ontology, for example the pizza ontology. Under the imports tab in the lower center window, click on the icon with a plus symbol over a globe icon to import from a URL, then type or paste in:

<http://www.co-ode.org/ontologies/pizza/2007/02/12/pizza.owl>

For further instructions, please refer to the TopBraid Composer documentation for importing and working with your data.

How do I update AllegroGraph Java Edition and TopBraid Composer libraries?

Franz offers a free AllegroGraph Java Edition that, for interfacing with TopBraid Composer, is more than adequate. Here is the web site to download the software:

http://www.franz.com/downloads/clp/ag_survey

After installing AllegroGraph Java Edition, you need to update the agraph.jar in the TopBraid Composer libraries. The new [agraph.jar](#) file is in the installation directory under the name:

[C:\Program Files\AllegroGraphFJE\com.franz.agraph-2-2-3.jar](#)

Copy this file to the two TopBraid Composer installation directories below:

[C:\Program Files\TopBraidComposer\configuration\org.eclipse.osgi\bundles\387\1\cp\lib](#)

[C:\Program Files\TopBraidComposer\configuration\org.eclipse.osgi\bundles\545\1\cp\lib](#)

Rename the file to [agraph.jar](#) (after deleting the old agraph.jar file). Now you are ready to use TopBraid Composer with AllegroGraph (Java edition) to browse an AllegroGraph database or to update the database.

How do I export the ontology created with TopBraid Composer to AllegroGraph database?

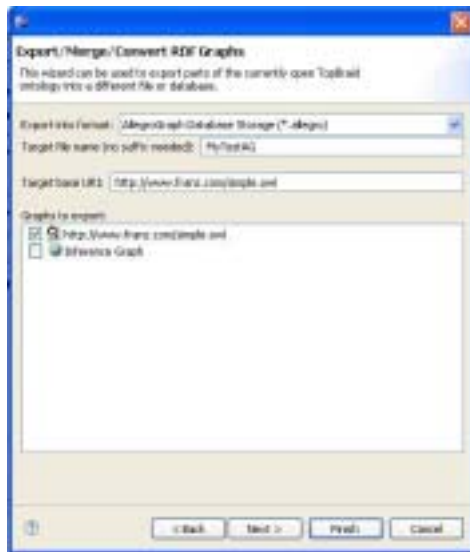
Start TopBraid Composer

Open an existing file (e.g., Kennedys.owl)

Right click on a project, select "Export"

Then select "Export/Merge/Convert"

From the "Export into format" select AllegroGraph.



Provide a name for Target File Name, e.g., "MyTestAG".

Click "Next", another dialog window shows up.



Give the same name, "MyTestAG", for AllegroGraph Database Name.

Using TopBraid Composer with AllegroGraph

Give the directory where the AllegroGraph database will be created, e.g., "c:\tmp\ag".
Make sure that AllegroGraph database Java Edition has been started.



```
AllegroGraph Java Edition
AllegroGraph Free Java Edition 2.1
Copyright (c) 2005-2006 Franz Inc. All Rights Reserved.
BUILD: June 12, 2007 13:52:39 GMT-0700
LIMIT: 50,000,000 triples.

; AG Server level 2.0.2
Initial Lisp Listener[2] Started server listener1 listening at *:4567
listener1[4] Starting listener.
AG101Server[6] Starting connection AG101Server
AG101Server[6] Ending connection :disconnect
AG101Server[6] Ended connection :disconnect
```

Click "Finish", and a database named "MyTestAG" will be created that contains all the data currently opened in TB Composer.

How to use TopBraid Composer with the Lisp Edition of AllegroGraph?

TopBraid Composer communicates with AllegroGraph through a server. You first need to install both products. Make sure you have the latest version of TopBraid Composer and all of the patches installed in AllegroGraph. (Described in the AllegroGraph FAQ, <http://agraph.franz.com/support/faq/#tbc>).

First start the AllegroGraph Server. The Lisp editions support the AllegroGraph server in the agraph module. This module includes the function start-agj-server. This function starts the server that allows TBC to access AllegroGraph. At the lisp prompt, after you have loaded AllegroGraph:

CG-USER(1) (require :update)

CG-USER(2) (system.update:install-allegrograph)

CG-USER(3) (require :agraph)

type the following:

CG-USER(4): (in-package #:db.agraph.user) ; to specify the right package, then type

TRIPLE-STORE-USER(5): (start-agj-server) ; to run the function and start the server

More detailed information on the AllegroGraph server can be found here, find the function name:

<http://agraph.franz.com/allegrograph/doc/lisp/reference-guide.html>

Then, in TopBraid Composer, select File > New > OWL/RDFS AllegroGraph Database.

Fill in the File name and AllegroGraph database name, both with the name you want to call the database, eg: agdb1 for both entries.

Fill in the AllegroGraph directory with the directory name, eg: C:\temp\agraph\.

The default Host: localhost and Port: 4567 should be ok as is.

Select Finish.

A new entry called adgb1.allegro will appear in the Navigator Place. You now have an AllegroGraph database open. To test, try loading an ontology, for example the pizza ontology. Under the imports tab in the lower center window, click on the icon with a plus symbol over a globe icon to import from a URL, then type or paste in: <http://www.co-ode.org/ontologies/pizza/2007/02/12/pizza.owl>

For further instructions, please refer to the TopBraid Composer documentation for importing and working with your data.

